

**259 Mandalay Circuit Beveridge VIC**

4 🚗 2 🚗 2 🚗

The message is all about luxury, the mood is all about low-maintenance elegance in a Mandalay Estate location loaded with all the area's exceptional advantages - and this inviting home is further enhanced by fabulous views over a rolling farmland backdrop. A high quality caesar-stone kitchen with 900mm oven and a walk-in pantry complements 2 outstanding living zones, 1 pre-wired for theatre room readiness, the other a sensational open-plan domain for enjoying and entertaining. 4 bedrooms and 2 bathrooms include a main bedroom with a walk-in robe and superb caesar-stone ensuite while the main bathroom is similarly finished in stylish stone. Ducted heating and dual heating/cooling systems deliver total comfort while an alfresco retreat, great rear garden and the stunning rural outlooks enhance the experience of living life the Mandalay way. Resident's club facilities - the pool, the gym, the tennis court and cafes - are only moments away from an

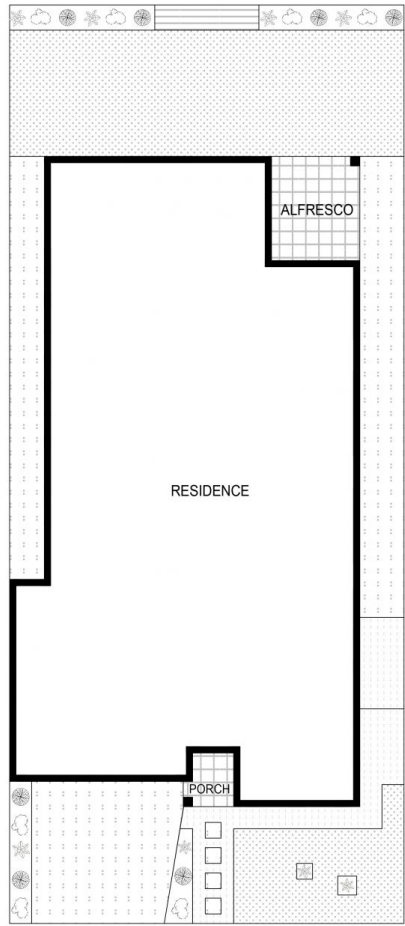
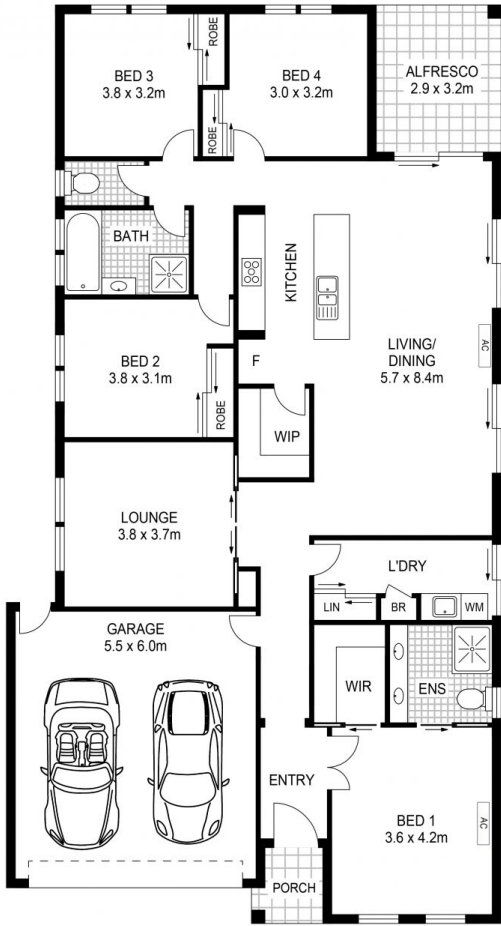
**Price** : \$ 636,000  
**Land Size** : 375 sqm  
**View** : <https://www.myagentre.com.au/sale/vic/north/beveridge/residential/house/6675950>



**Adriano Persichetti**  
03 9633 7111



**Jenni Ter Haar**  
03 9633 7111



SITE PLAN